

Strategie e politiche per l'ambiente nel territorio riminese

Centro di educazione alla Sostenibilita'
Rimini, Innovation Square,
15 dicembre 2017

Struttura

- Mare
 - Psbo – Balneazione
 - Natura
 - Marine litter
- Terra&Aria
 - Verde urbano
 - Parco del Mare
 - Mobilita' sostenibile
- Rifiuti
 - Raccolta differenziata
 - Attenzione al decoro
- Prossimo futuro...

Mare

- Piano di Salvaguardia della Balneazione
...e Natura

Evitare acque miste in mare

Evitare divieti di balneazione dopo piogge intense

2016: *ampliamento depuratore da 220.000 persone ad un massimo di 550.000*

2017: *50% abbattimento di divieti di balneazione*

2020: *nessun divieto di balneazione*





Excellent bathing water quality

★ ★ ★	excellent
★ ★	good
★	sufficient
—	poor



improved from poor in 2015
to sufficient, good or excellent
in 2016

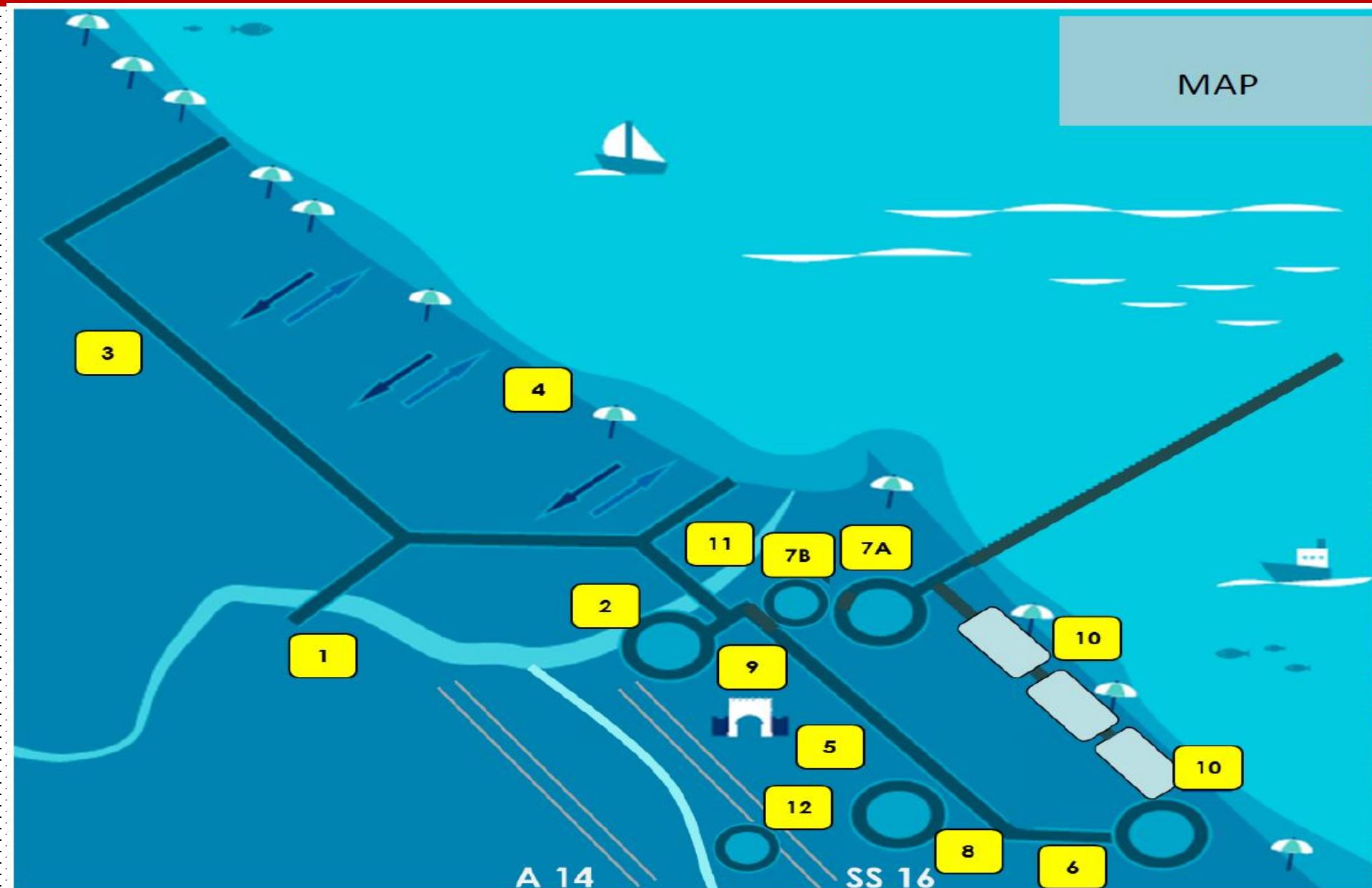
- Excellent
- Good
- Sufficient

Bathing water quality
deteriorated from sufficient,
good or excellent in 2015 to
poor in 2016

- Poor

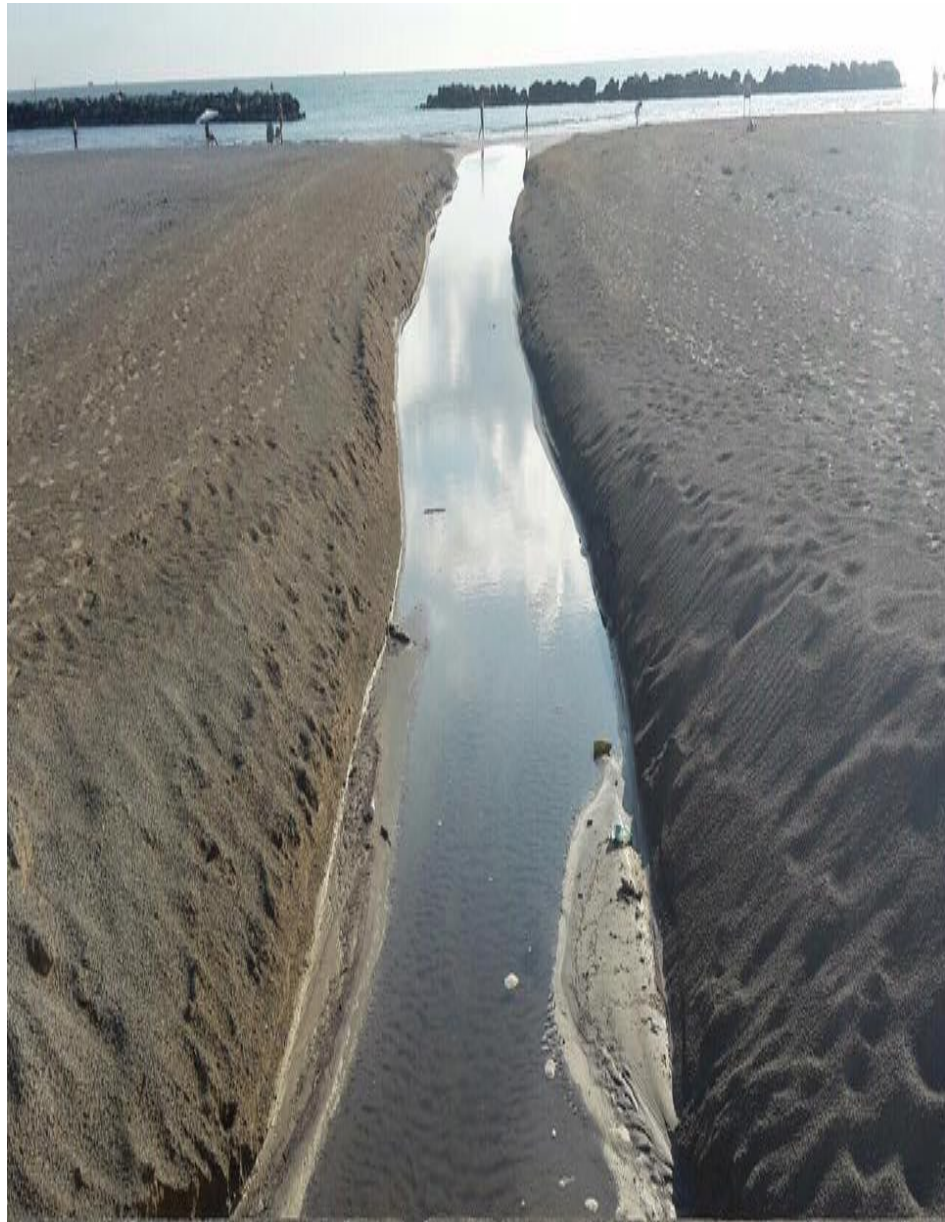
- EU Member States
and other countries
with results
- Outside coverage

PIANO DI SALVAGUARDIA DELLA BALENAZIONE



- 1
- 2
- 3
- 4
- 5
- 6
- 7A
- 7B
- 8
- 9
- 10
- 10
- 11
- 12

1.- Duplication purifier of Santa Giustina with storage tank;
2.- Conversion of Rimini Marecchiese purifier in storage tank;
3.- Realization of north dorsal in order to connect the purifier of Bellaria to the Purifier of Santa Giustina;
4.- Completion of sewage network separation in the area of North Rimini;
5.- Realization of south dorsal with new lifting and dedicated pressing pipeline;
6.- Connection of the already separated basins in the southern area with respect to the south dorsal;
7A- Implementation of Ausa basin underwater and water-scooping plant and lamination / first rain linked tanks;
7B- Realization of Hospital lamination tank;
8.- 2B lift strenghtening and pressing pipeline rebuilding;
9.- Structural interventions for separation in the areas Fosse Rodella, Colonnella and Macanri
10.- Sewage renovation at Rimini Island;
11.- Cava lake.





Mare

- Marine litter
...e Natura

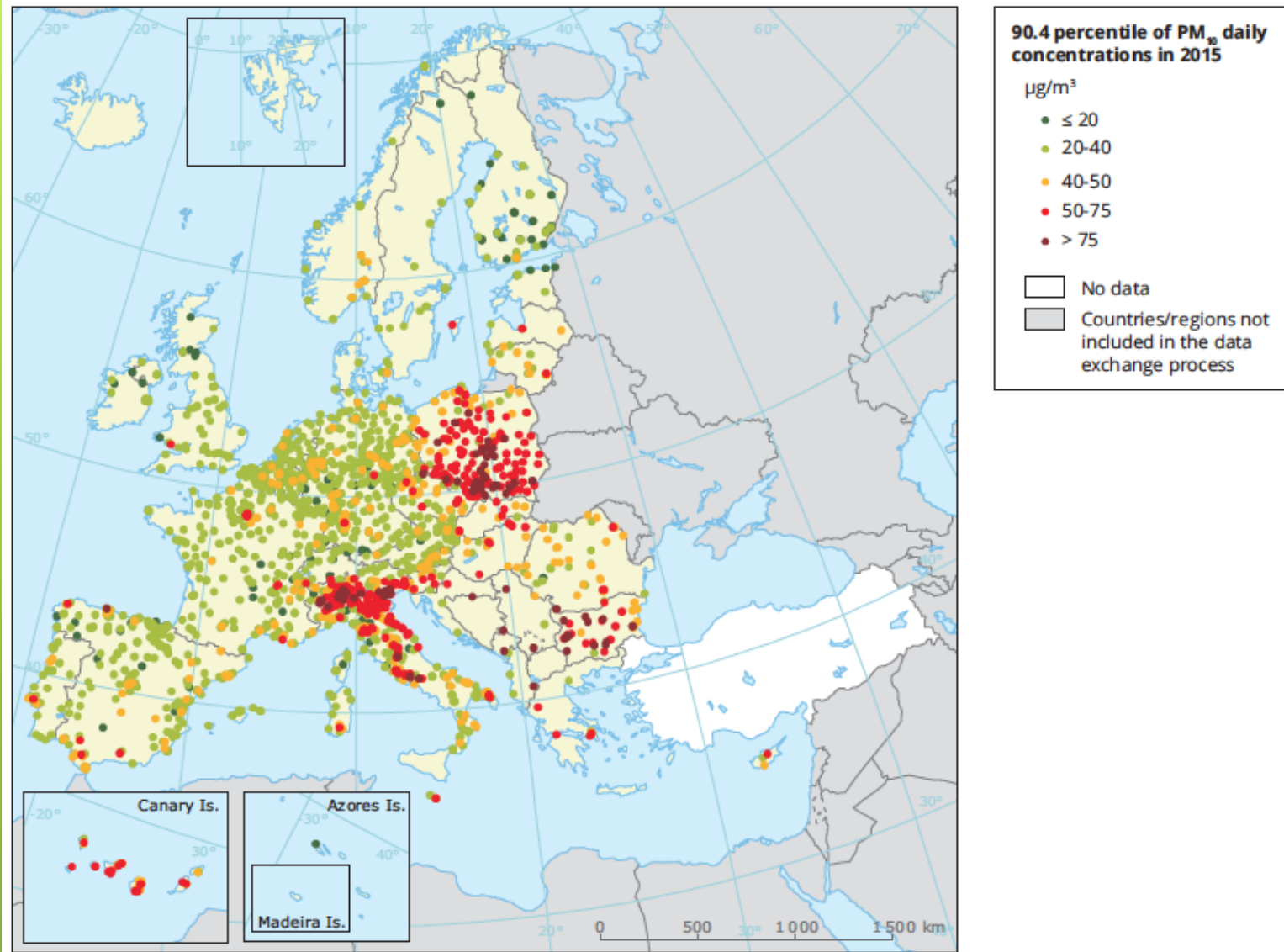


AMBIENTE



Terra e Aria

- Verde Urbano e Parco del Mare



Note: Observed concentrations of PM₁₀ in 2015. The map shows the 90.4 percentile of the PM₁₀ daily mean concentrations, representing the 36th highest value in a complete series. It is related to the PM₁₀ daily limit value, allowing 35 exceedances of the 50 µg/m³ threshold over 1 year. The red and dark red dots indicate stations with concentrations above this daily limit value. Only stations with more than 75 % of valid data have been included in the map. The stations from the former Yugoslav Republic of Macedonia are not included due to technical issues.

Source: EEA, 2017a.



Goals

- **300 ha of linear urban park**, from Torre Pedrera to Miramare, of which about **65 ha** with green Mediterranean vegetation.
- **20 km of paths for physical activities**, with the scientific monitoring and support of the Department Science and Quality of Life Bologna University – Campus Rimini.
- **15 km walk path** in front of the sea.
- **Open air gyms and indoor.**
- **15 km dedicated cycling path.**
- **Restaurants** with local and organic food.
- **Spa/wellness and other attractions** for adults and children

STATUS QUO



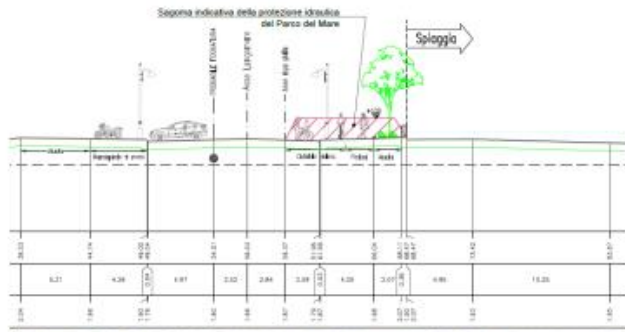
MIGLIORARE LA QUALITÀ DELL'ARIA;
MITIGARE GLI EFFETTI DEL CAMBIAMENTO CLIMATICO



IL FUTURO E IL PRESENTE



MITIGAZIONE DA RISCHI AMBIENTALI



Legenda:

- Perimetro Parco del Mare
- Sezioni
- Linea costa rilevata Aprile 2017
- Linea di costa prevedibile per effetto della sola subsidenza
- Linea di costa prevedibile per effetto dell'innalzamento del livello marina dovuto ai cambiamenti climatici
- Linea di costa prevedibile per effetto combinato dei cambiamenti climatici e della subsidenza dell'arenile



ACCESSIBILE A TUTTI

Accessible also to people with reduced mobility



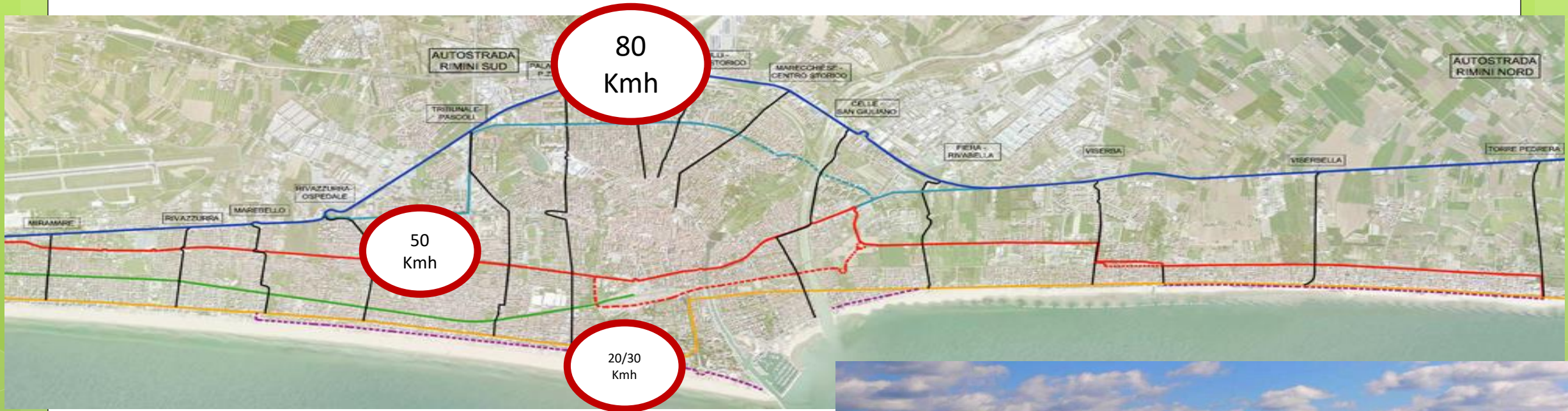
- People will move around in a pleasant, comfortable and healthy way.

Terra e Aria

- Mobilità sostenibile

RI-DISEGNARE LA MOBILITÀ URBANA

A hierarchic approach to mobility

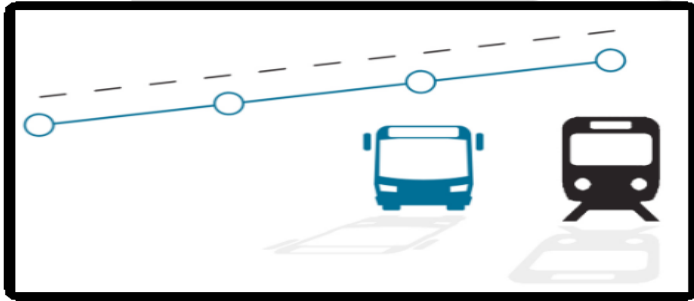


A framework of sustainable mobility services and options



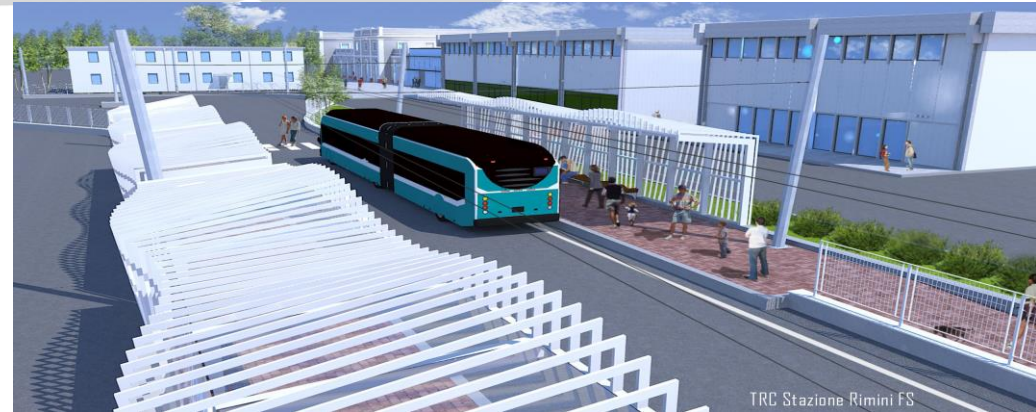


SOSTENIBILE ...E RI-DISEGNA LA MOBILITÀ



Numeri del TRC

- 15 stops and 2 end of line
- 23 min Rimini to Riccione
- 1500 passengers/hour
- 12.000 private cars
- 11% pollutions emission



TRC_Coastal Rapid Transport

Rifiuti

- Raccolta differenziata
- Decoro urbano
- Verso la “puntuale”







Grazie per l'attenzione !

