

COMUNE DI RIMINI

Piano particolarreggiato di iniziativa

privata -residenziale di espansione r.f. localit - Ghetto Tombanuova

TIPOLOGIE EDILIZIE: TIPOLOGIE C1-C2-E1-E2-F

12 GIU 2021 10:49:10

107910

12 GIU 2021 10:49:10

12 GIU 2021 10:49:10

12 GIU 2021 10:49:10

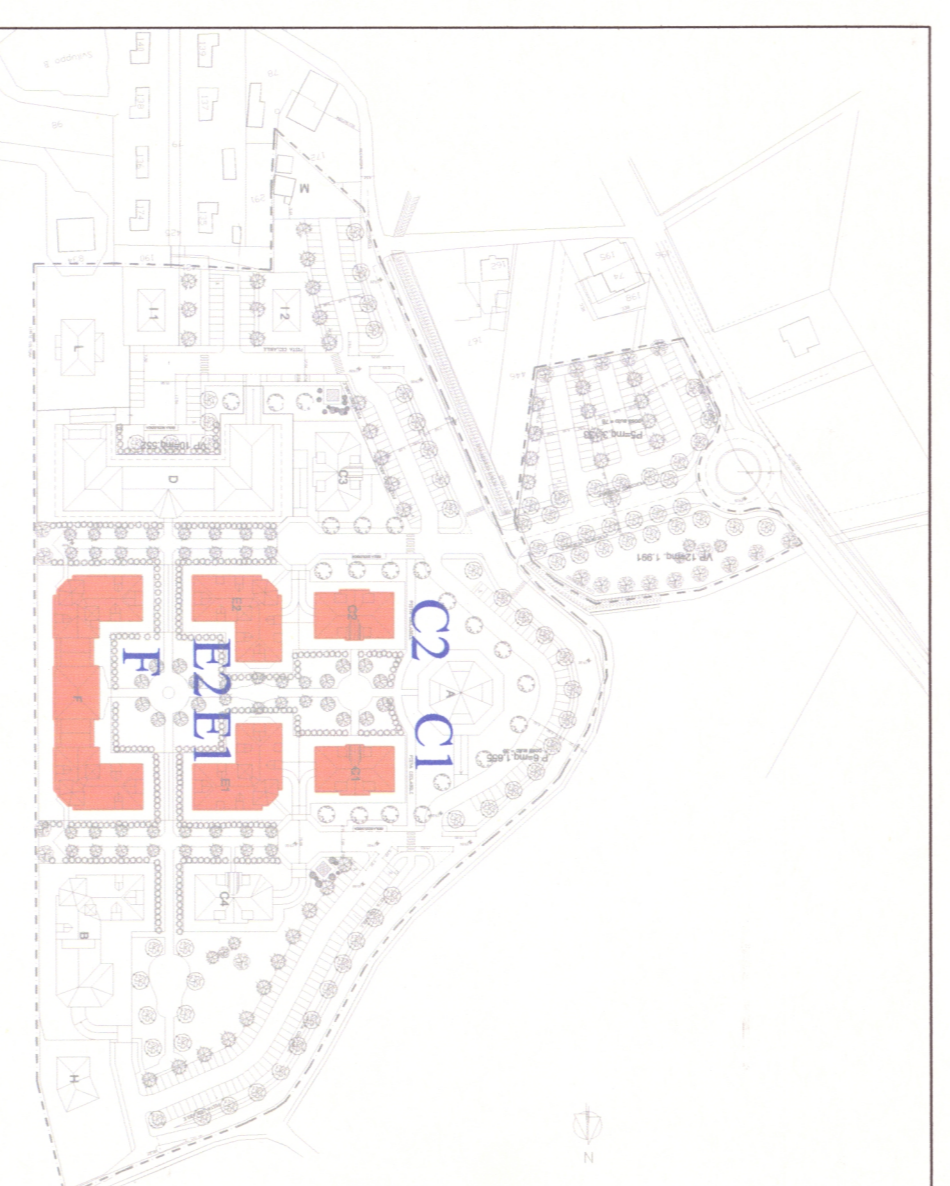
tavola n. 11 b data: Dicembre 2005 scala: 1:200

Dott. Arch. Valerio Menghi
Dott. Arch. Silvano Pioletti

Dott. Ing. Elio Abati

Studio di Architettura Menghi-Pioletti
Piazza Rossario 3, Villa Verucchio (RN)
Tel. e fax 0541 676238
email: archmenghi@comprojipietti.it

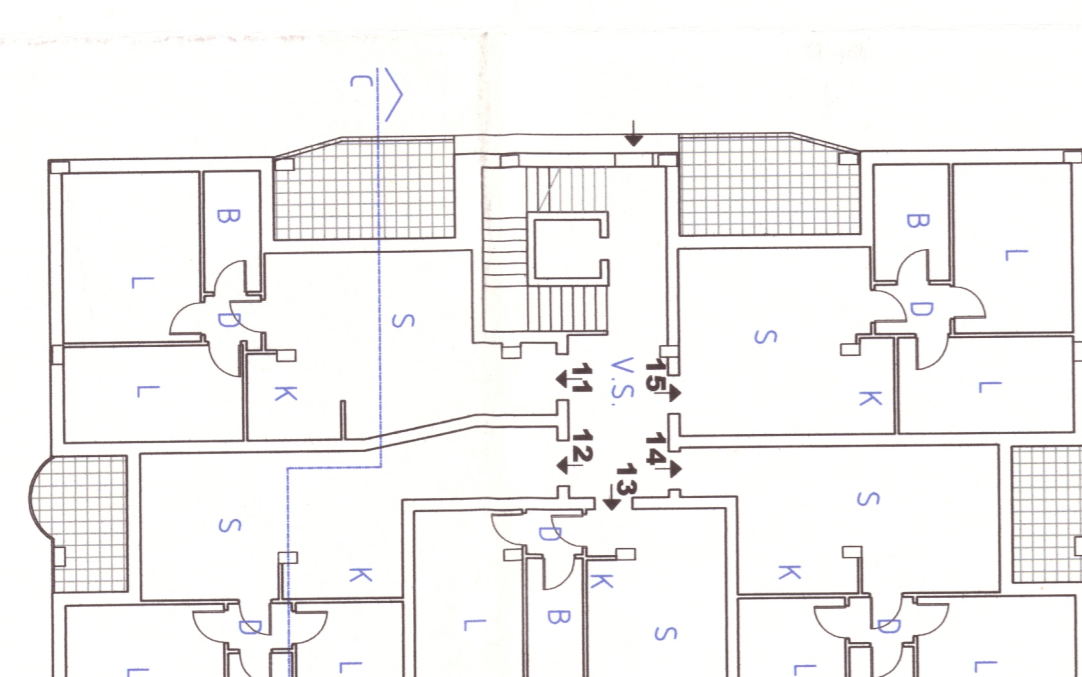
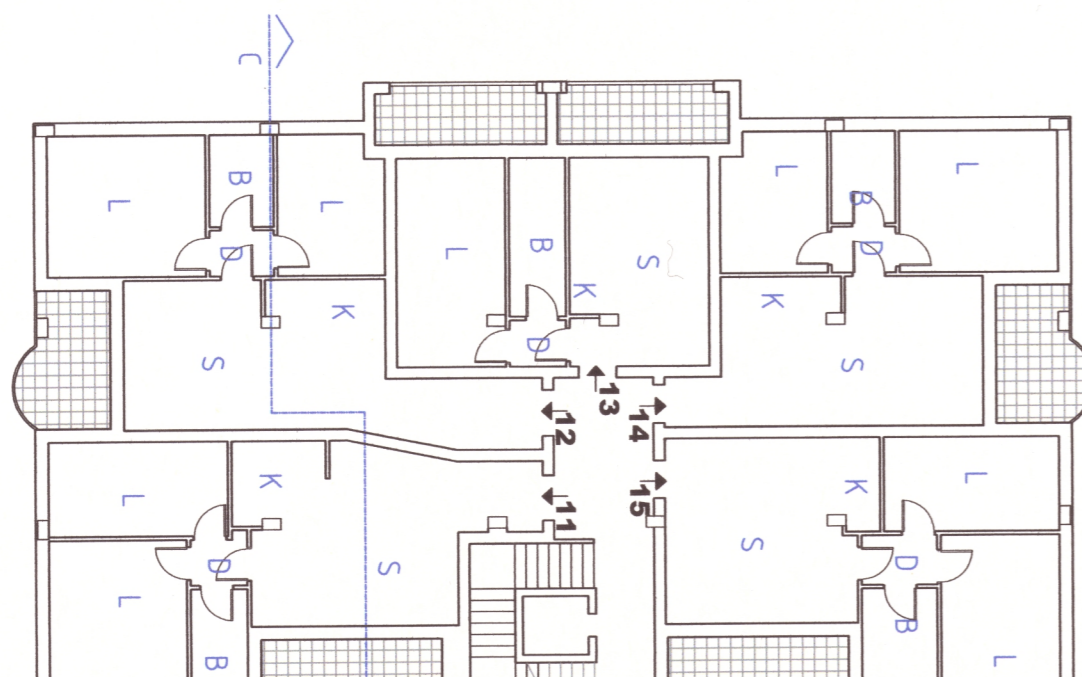
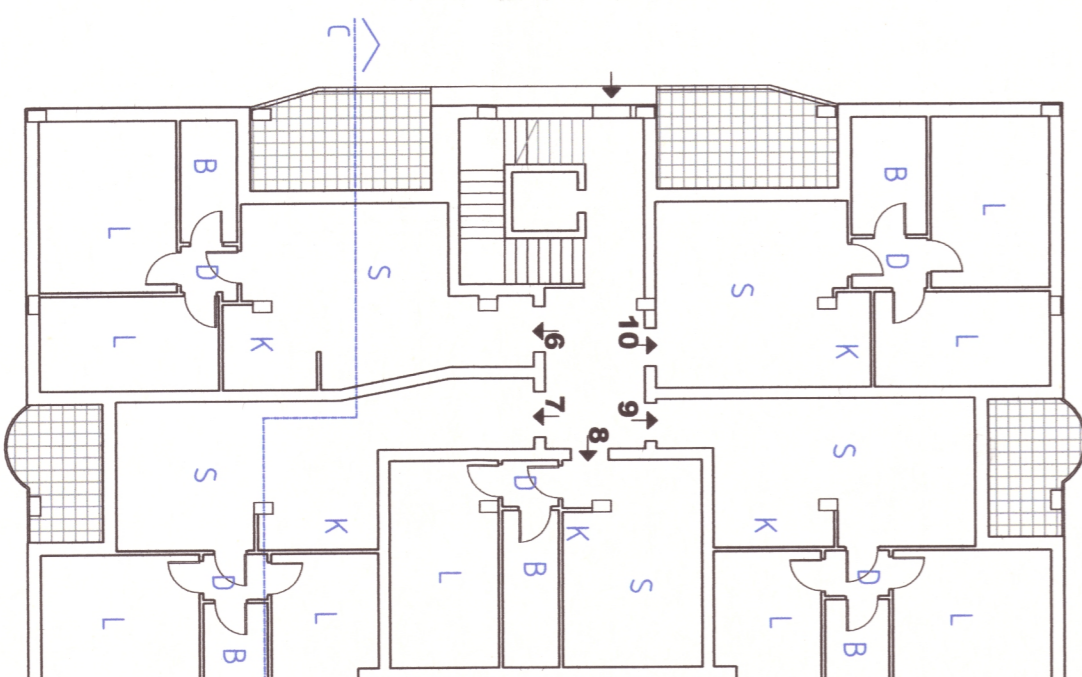
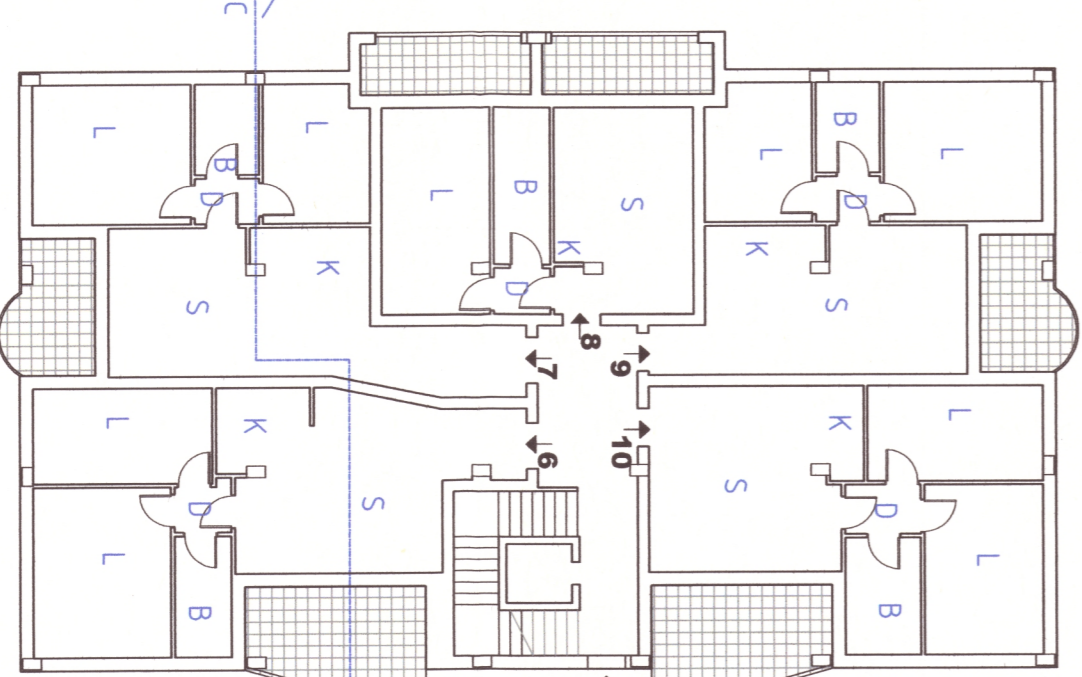
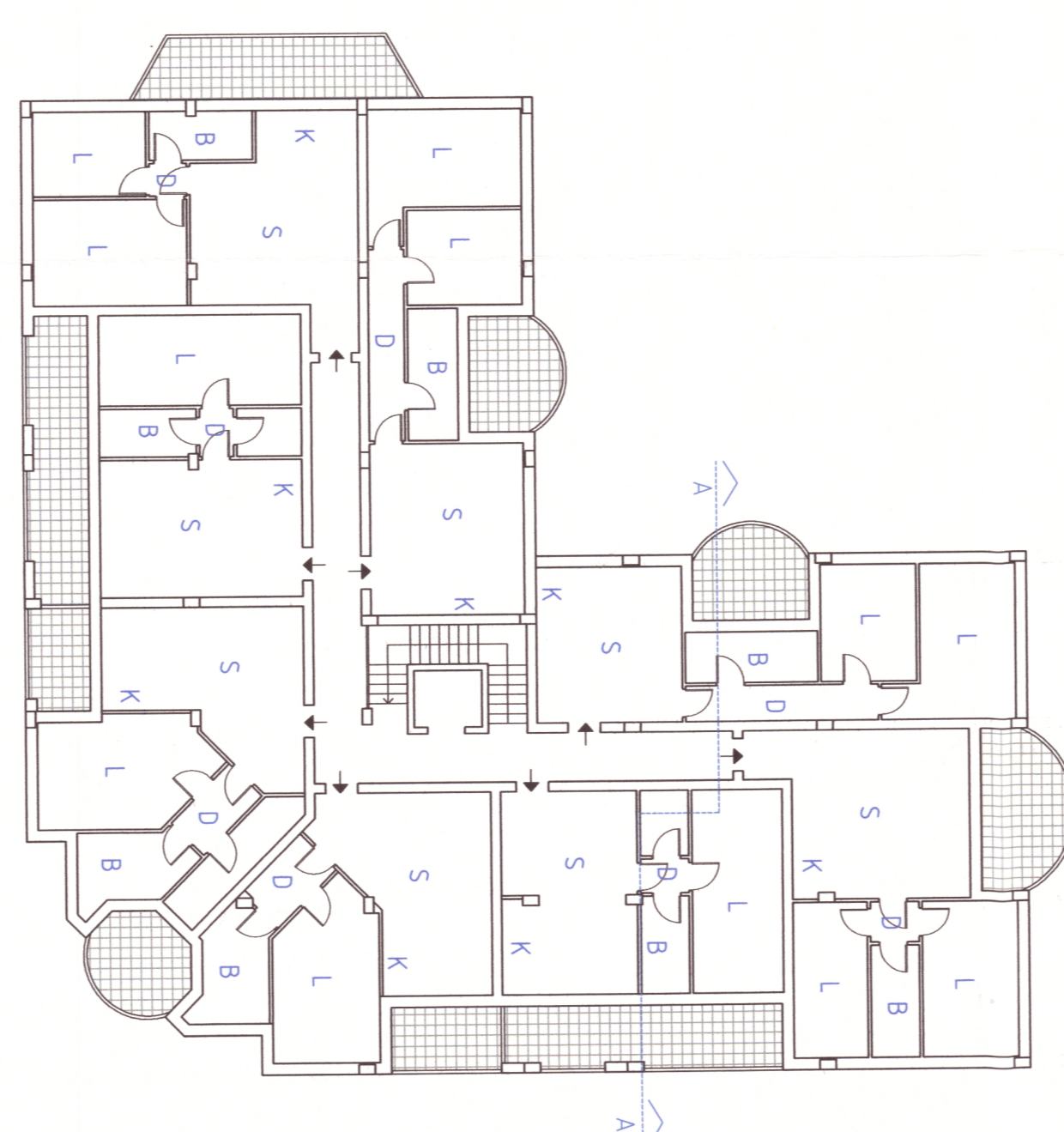
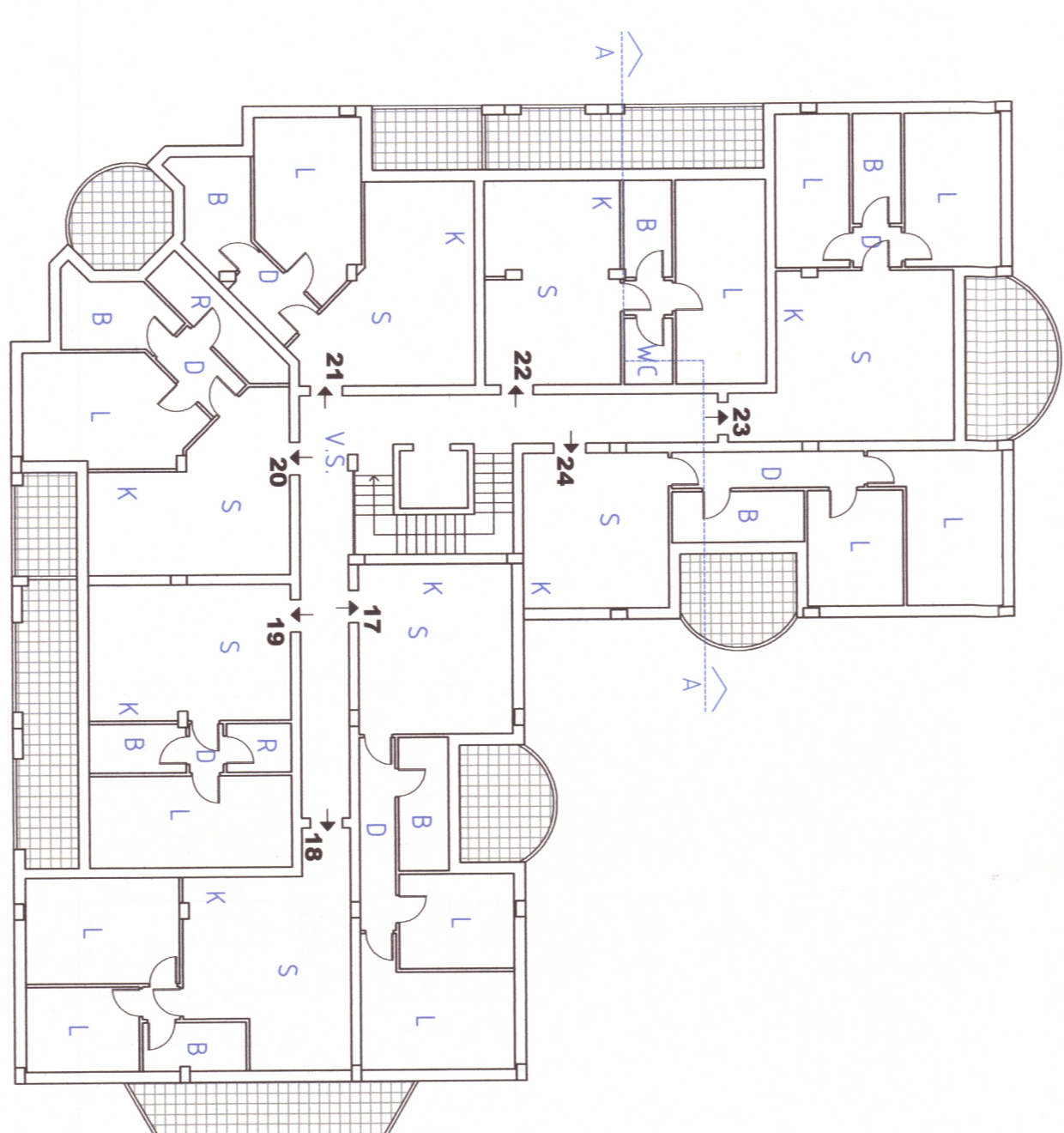
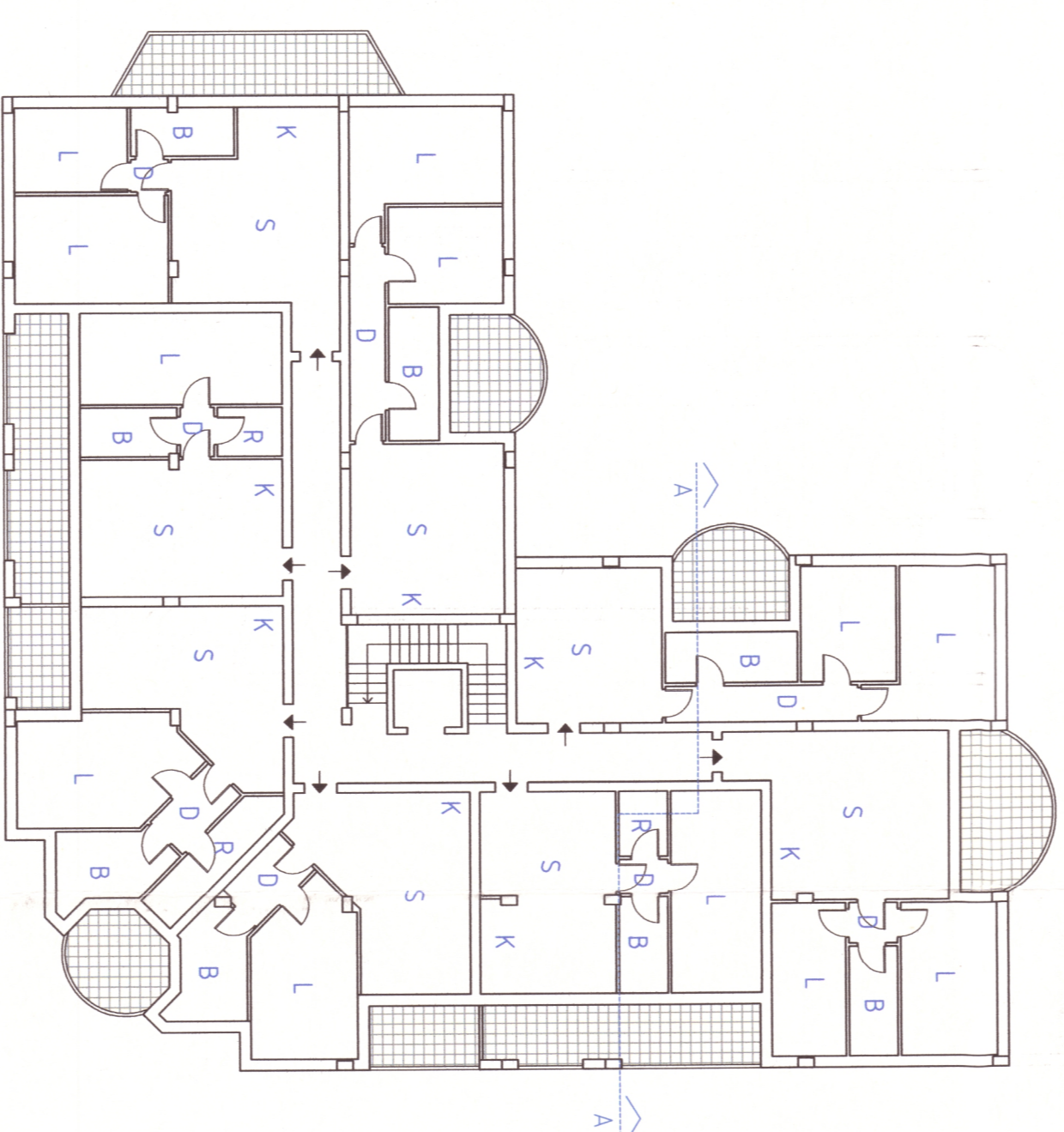
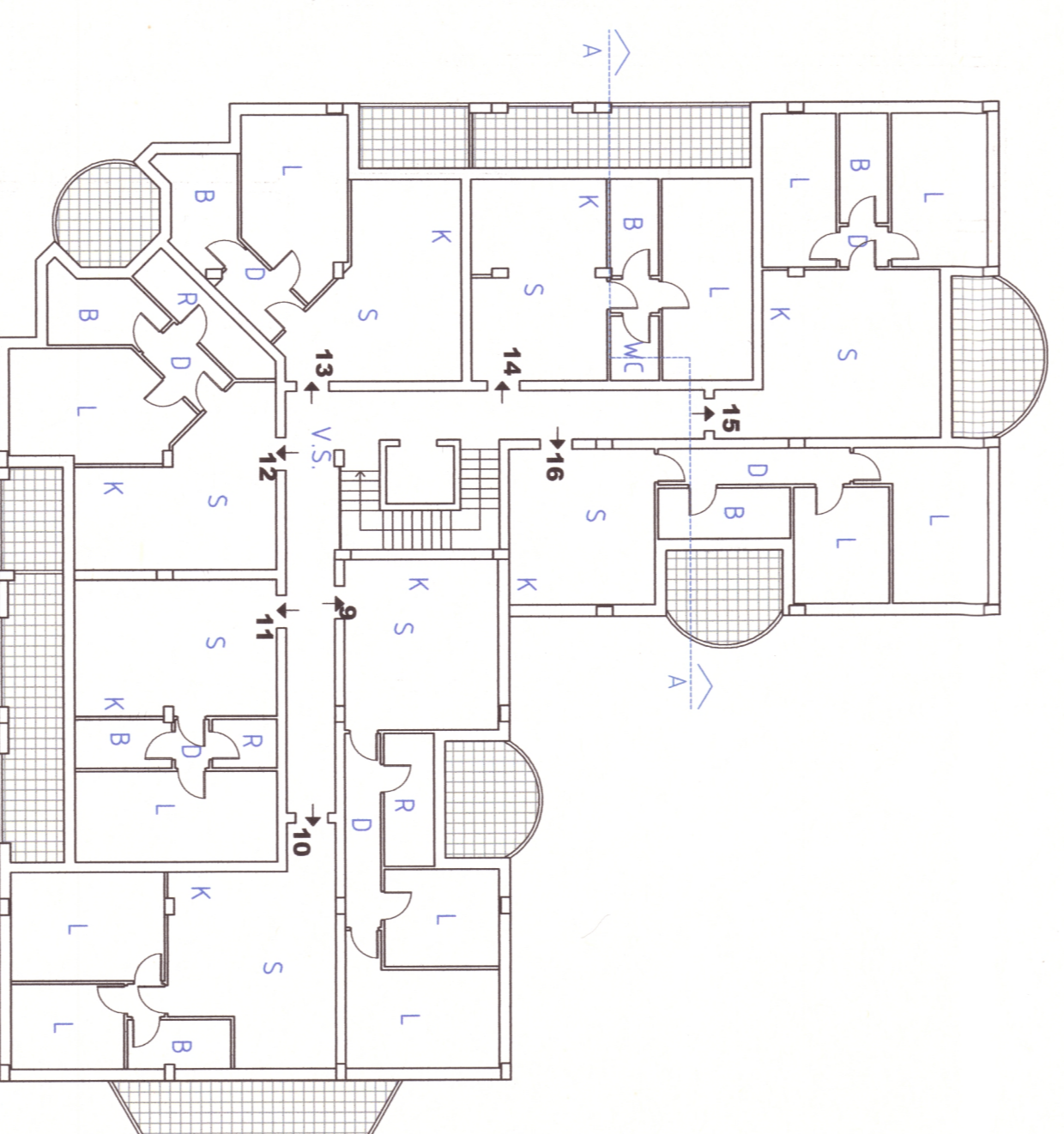
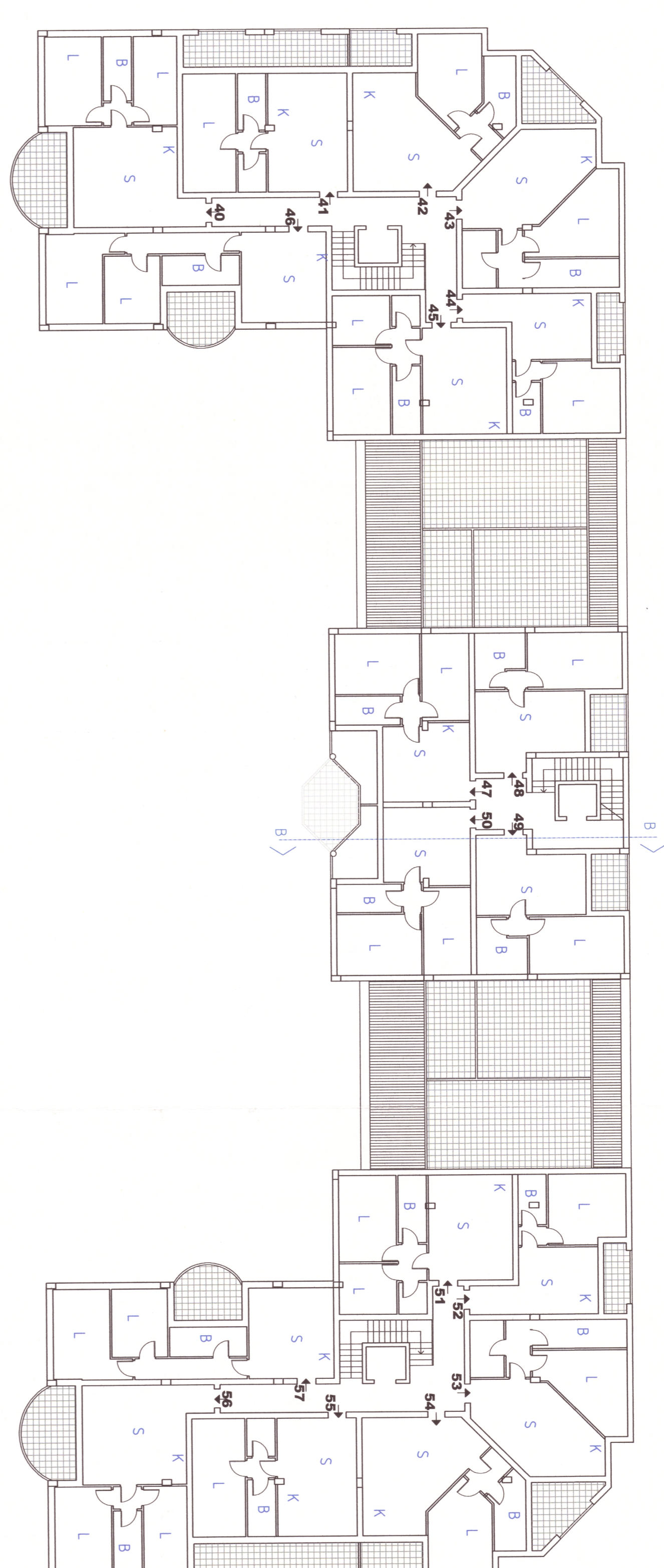
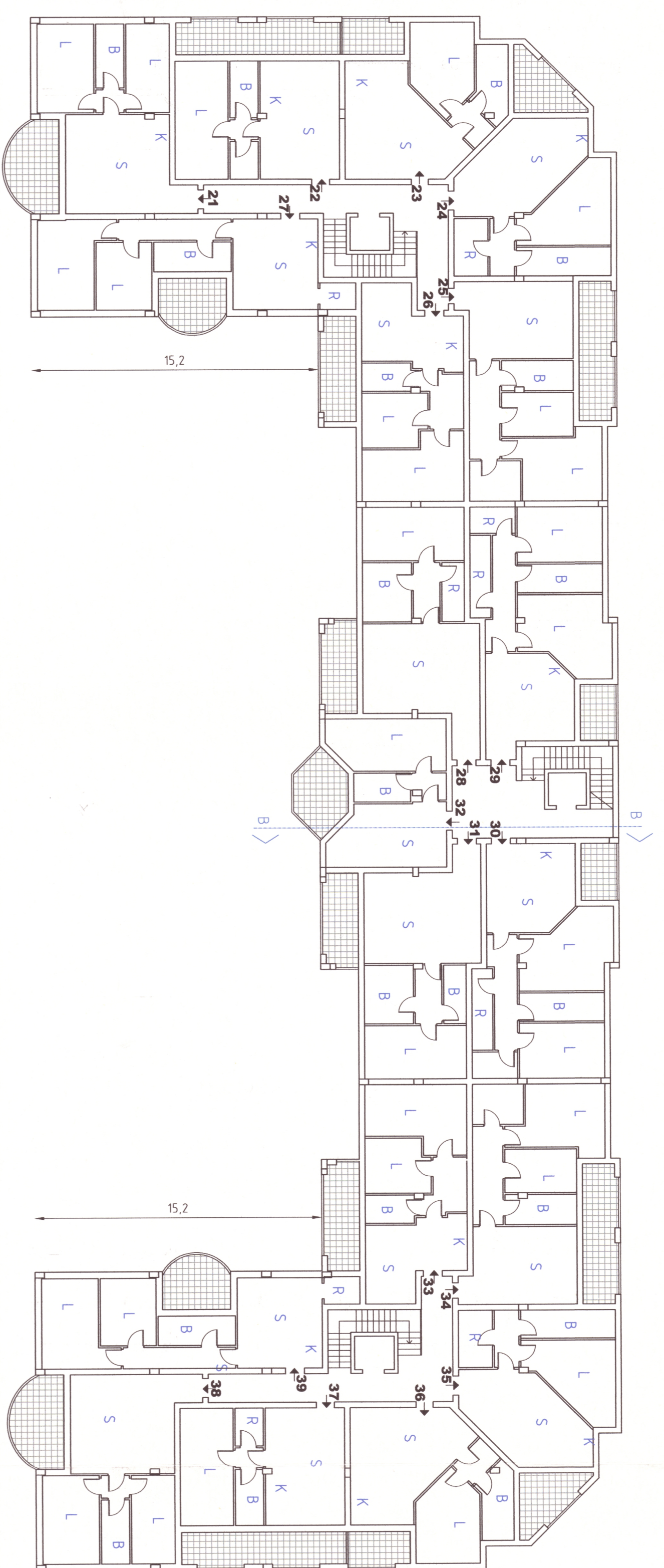
Via Valentini, 15 47900 - Rimini
Tel. 0541-792323
Fax 0541-792320
email: info@abati.com.it



Tipo	SU MAX	S/PK PRIVI	N. POSTI AUTO	N. ALLOGGI
C1	1434	459,77	17	17
C2	1434	459,77	17	17
TOTALE	2868	919,54	34	34

Tipo	SU MAX	S/PK PRIVI	N. POSTI AUTO	N. ALLOGGI
E1	2321	849	28	28
E2	2321	849	28	28
TOTALE	4642	1698	56	56

Tipo	SU MAX	S/PK PRIVI	N. POSTI AUTO	N. ALLOGGI
F	5185	1844,25	70	67



PIANTA PIANO PRIMO

PIANTA PIANO SECONDO